

GTD GT60

GEOTHERMAL & WATER WELL DRILL RIG



GTD GT60 DRILL RIG

The **GT series** of drill rigs are known for their **high productivity** and **reliability** in geothermal drilling, with **proven performance** in both domestic and commercial applications around the world. These rigs are the **number one choice** for **leading industry professionals**, thanks to their **versatility** and ability to handle a variety of drilling conditions with **precision** and **efficiency**.

The **GT60** model is designed to reach **depths beyond 2,600 feet (800 meters)** using **mud, air, and hammer** drilling methods. It is equipped with our unique **rod rack and loading system**, which is the most **robust, reliable,** and **safest rod handling system** on the market, ensuring **maximum safety** and **efficiency** in all drilling operations.

DIMENSIONS & WEIGHT

- ▶ Length 41' (12.5 m)
- ▶ Width 8' 2" (2.5 m)
- ▶ Height 10' 3" (3.2 m)
- ▶ Weight 66,000 lbs - 77,000 lbs
(30,000 kg - 35,000 kg)
Actual weight will vary depending on the options selected and installed, e.g. Rods...

DERRICK & FEED SYSTEM

- ▶ 55,000 - 66,000 lbs (25,000 - 30,000 kg) pull-back
- ▶ 26,455 lbs (12,000 kg) push-down
- ▶ 25' (7.62 m) top head stroke

DRILL PIPE & CASING

- ▶ 3½" x 25' (7.26 m) 50 rod capacity
1,250' (381 m) on board
- ▶ 4" x 25' (7.26 m) 40 rod capacity
1,000' (305 m) on board
- ▶ Max diameter 12½" (320 mm)

ROTARY DRILL HEAD - EURODRILL RH24X

- ▶ EA61V Head motors
- ▶ Swivel with 2" or 3" thru-hole
- ▶ 220 rpm at 3,319 lb-ft (4.5 kNm)
- ▶ 77 rpm at 9,293 lb-ft (12.6 kNm)
- ▶ Floating Spindle (shock absorber)

CRAWLER (TRACK) BASE

- ▶ Doosan Solar 130
- ▶ Steel with rubber pads
- ▶ Wireless remote travel

ENGINE

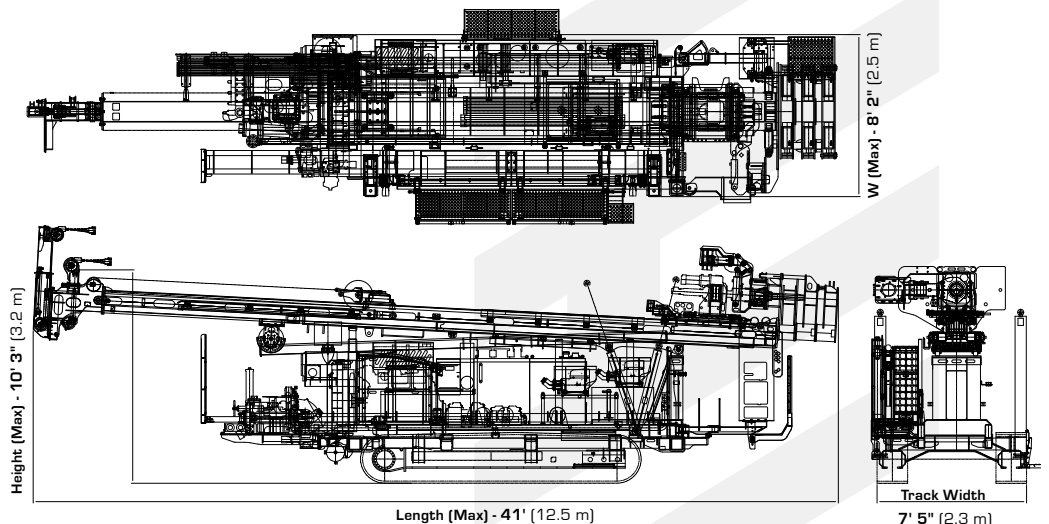
- ▶ Cummins X12 Tier 4 (stage 5)
- ▶ 513 hp (377 kW)

GTD STANDARD FEATURES

- ▶ Sideshift - Sliding Drill Head
- ▶ Swivel & Floating Spindle Sub
- ▶ Height Adjustable Working Table
- ▶ Triple Clamps - One rotating
- ▶ Hydraulic Centralizing Rollers
- ▶ Hydraulic Breakout Chain Wrench
- ▶ Auxiliary Hydraulic Ports and Controls
- ▶ Main Winch - 22,000 lbs (10,000 kg)
- ▶ Wire/Sandline Winch
- ▶ Water Injection Mist Pump
- ▶ DTH Lube System
- ▶ Rod Rack & Rod Loader
- ▶ Hydraulic Welder & Generator (7.5 kW)
- ▶ Self Loading Jacks/ Outriggers
- ▶ Air Compressor: 24 cfm (673 lpm), 130 psi (9 bar)
- ▶ Centrifugal Pump: 4x3x13 Single-stage
- ▶ 5x6 Triplex Piston Pump:
317 gpm @ 580 psi (1200 lpm @ 40 bar)

OPTIONS

- Winch Length 1,000' - 6,500' (300 m - 2,000 m)
- Hydraulic Sliding Rod Wrench
- Angled Drilling
- Safety Cage



GTD GT60 DRILL RIG

SLIDING HEAD



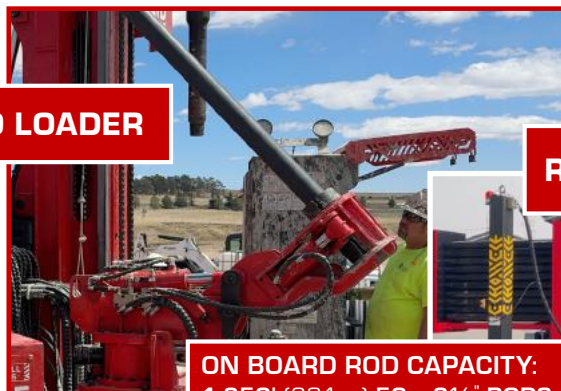
HEIGHT ADJUSTABLE WORKING TABLE



CAN BE USED AS A CASING EXTRACTOR

ADJUSTABLE HIGH / LOW ROTATION & TORQUE

ROD LOADER



ROD RACK SYSTEM

ON BOARD ROD CAPACITY:
1,250' (381 M) 50 x 3 1/2" RODS OR
1,000' (305 M) 40 x 4" RODS

OPERATED BY THE LEAD DRILLER, SECOND MAN OR BOTH ON DUAL CONTROLS

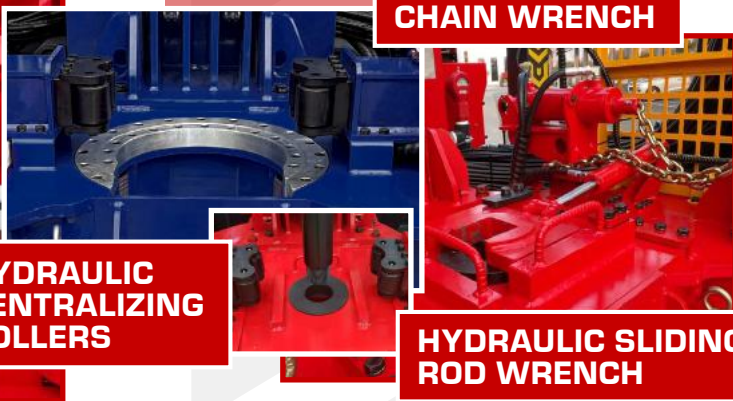
**TRIPLE CLAMPS
1 ROTATING & 2 FIXED
12 1/2" (320 mm) OPENING**



HYDRAULIC CHAIN WRENCH

HYDRAULIC CENTRALIZING ROLLERS

HYDRAULIC SLIDING ROD WRENCH



STEEL TRACKS WITH RUBBER PADS

REMOTE CONTROL



ANGLED DRILLING

SELF LOADING



4 x HYDRAULIC LEGS TO LIFT & LEVEL THE RIG

GTD GT60 DRILL RIG

COMPRESSOR



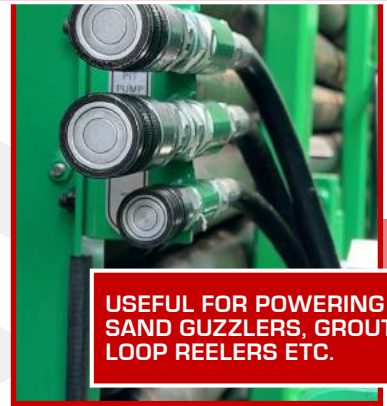
USEFUL FOR PNEUMATIC TOOLS,
PRIMING CENTRIFUGAL PUMPS,
CLEARING HOSES/PUMPS, ETC.
(PREVENTS COLD WEATHER OVER NIGHT FREEZING)

**INDEPENDENT
MAIN WINCH &
WIRE/SANDLINE
WINCH**



**ROTATING 90°
AND EXTENDS**

AUXILIARY HYDRAULICS



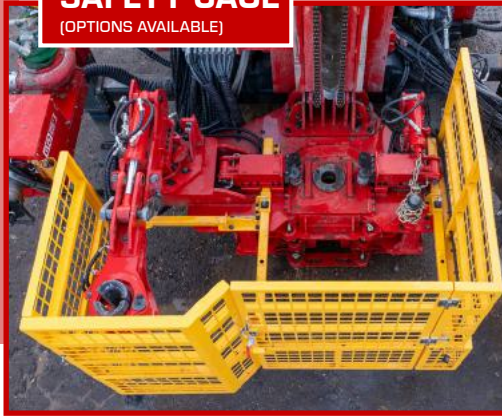
USEFUL FOR POWERING
SAND GUZZLERS, GROUTERS,
LOOP REELERS ETC.

**WELDER &
GENERATOR**



SAFETY CAGE

(OPTIONS AVAILABLE)



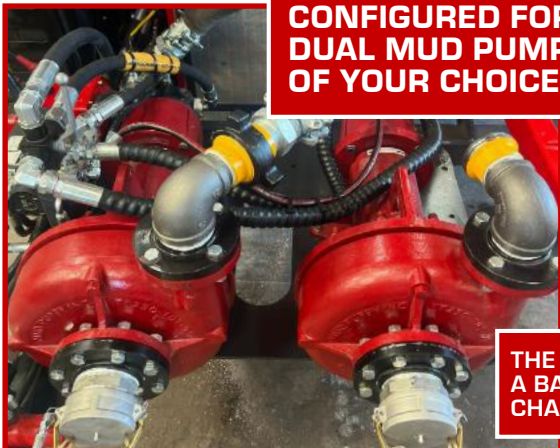
**TRIPLEX MIST PUMP
FOR AIR DRILLING &
PRESSURE WASHER**



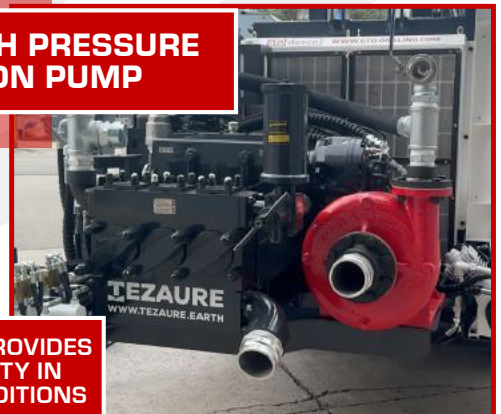
**...4x3x11 CENTRIFUGAL
4x3x13 CENTRIFUGAL**



**CONFIGURED FOR
DUAL MUD PUMPS
OF YOUR CHOICE...**

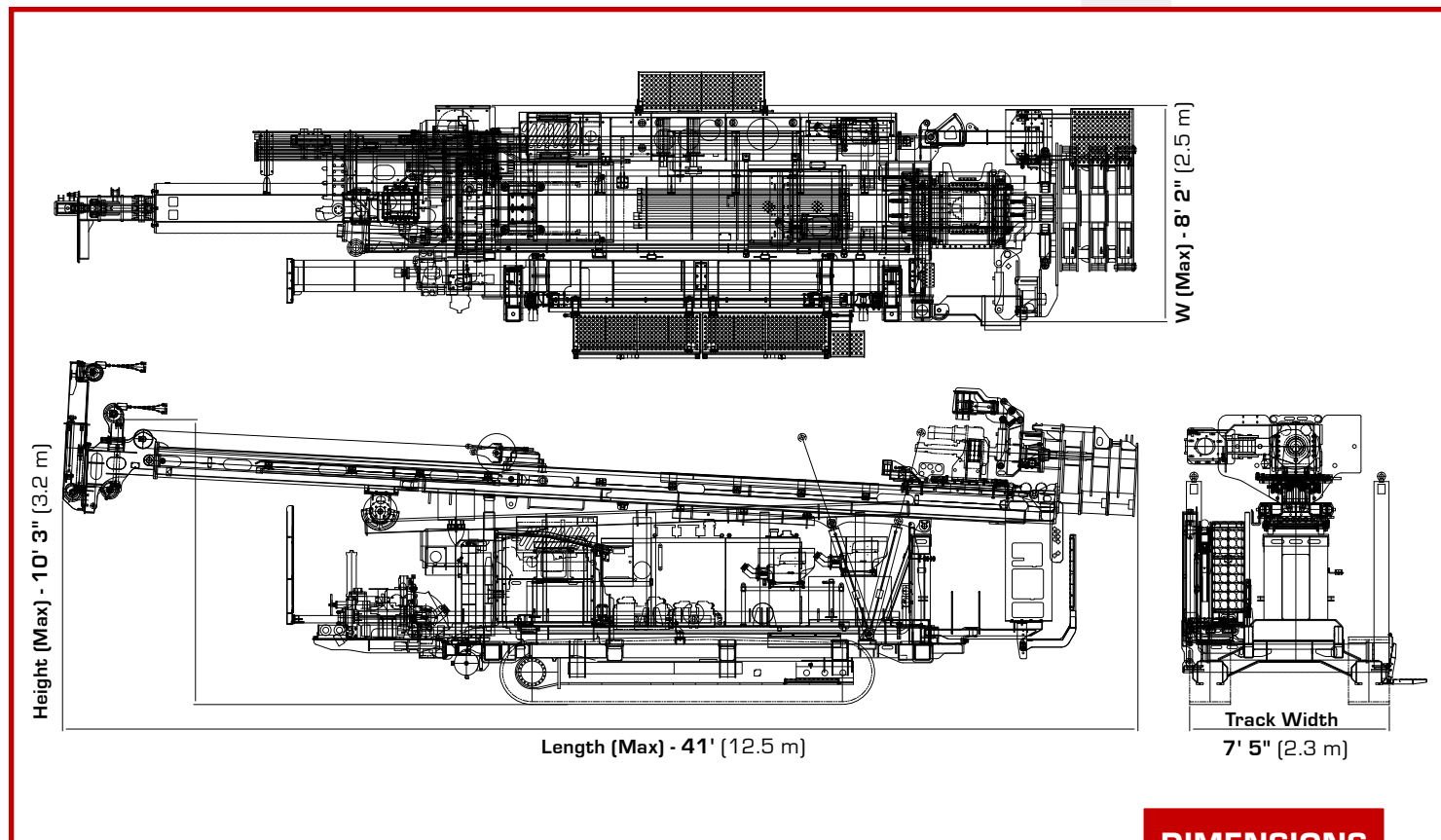


**...HIGH PRESSURE
PISTON PUMP**



THE DUAL PUMP SETUP PROVIDES
A BACK-UP AND VERSATILITY IN
CHANGING DRILLING CONDITIONS

GTD GT60 DRILL RIG



DIMENSIONS

NOTE: THE MEASUREMENTS ABOVE ARE THE BASE DIMENSIONS WHICH MAY BE SUBJECT TO VARIATION DEPENDENT ON FINAL DESIGN SPECIFICATIONS. TECHNICAL DRAWING IS FOR VISUALIZATION PURPOSES ONLY.

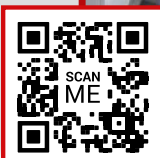
SCAN TO WATCH A GTD RIG BREAKING RECORDS



574 FT
[175M]
**BOREHOLE
DRILLED
IN 54 MINS**

*** DON'T BASE YOUR
DECISION ON SPECS
ALONE, COME & SEE
THE RIG IN ACTION...**

**GET IN TOUCH AT
INFO@GTD-DESCO.COM**



13,550 FT
[4,130M]
DRILLED, LOOPS INSTALLED & GROUTED
**IN ONE WEEK
WITH ONE RIG**

SCAN TO WATCH AN INTERNATIONAL GTD CUSTOMER BREAKING RECORDS IN HOLLAND